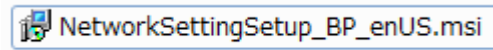


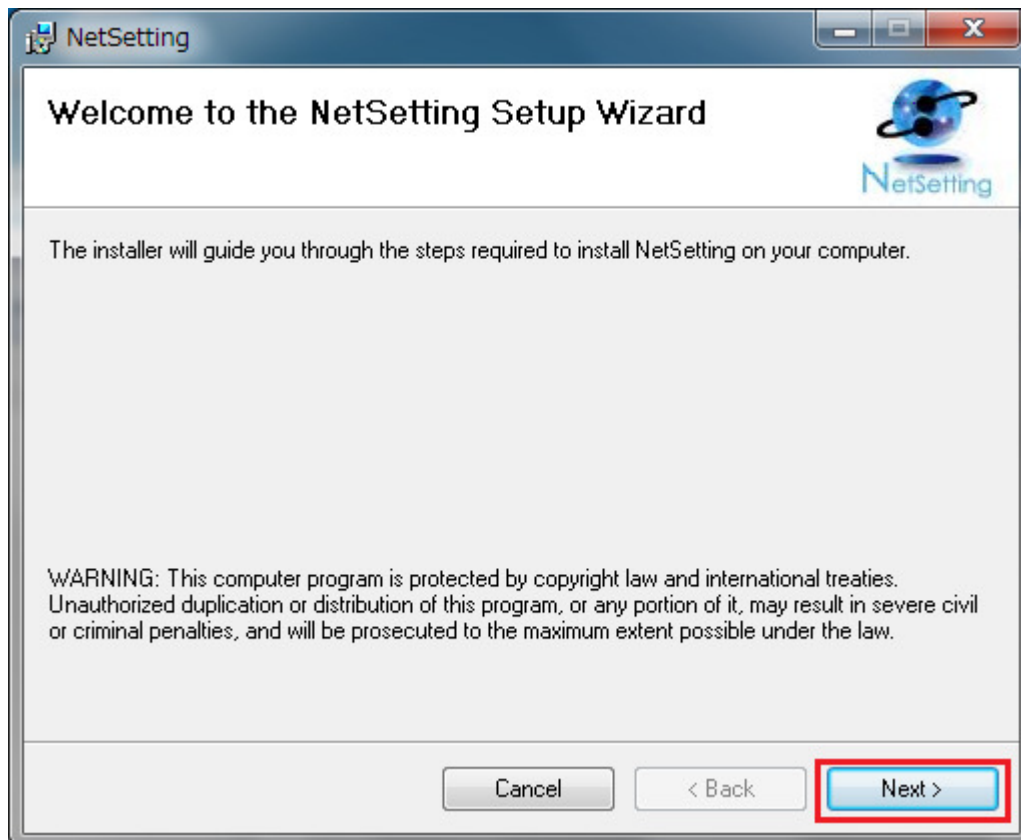
400PEI+ Series LAN Interface setting

- 1 . Install “NetSetting”.

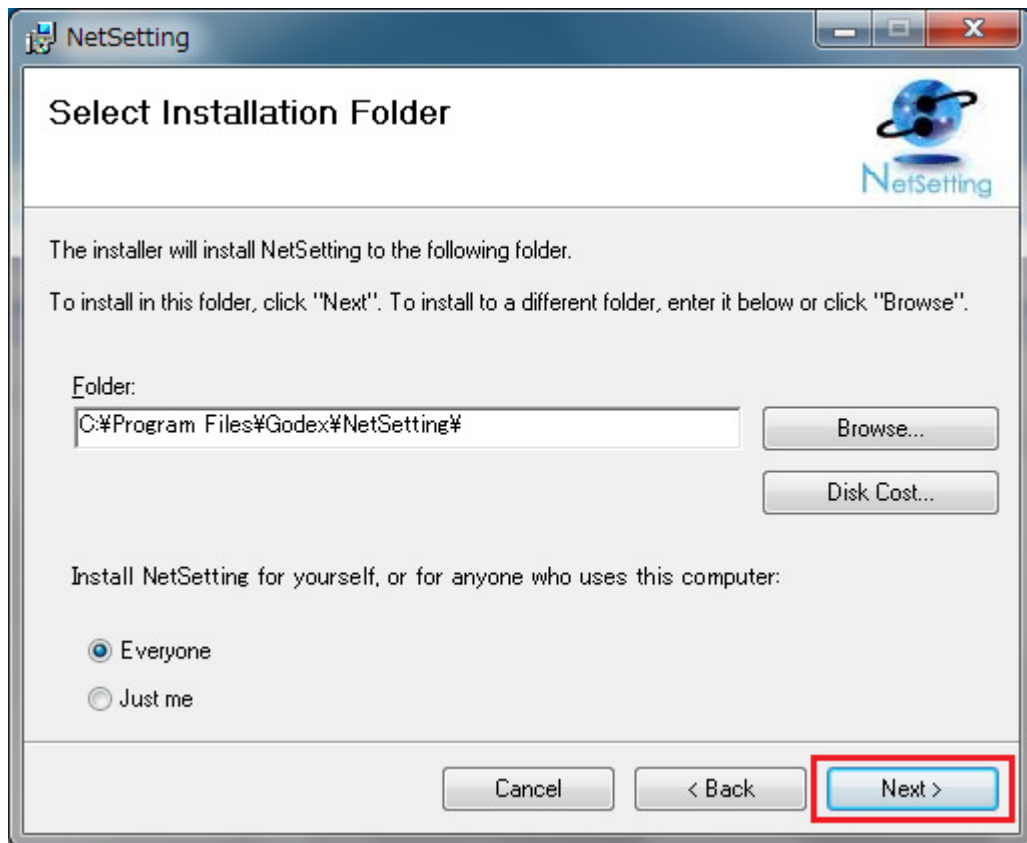
Double click “NetworkSettingSetup_BP_enUS.msi” to start installation.



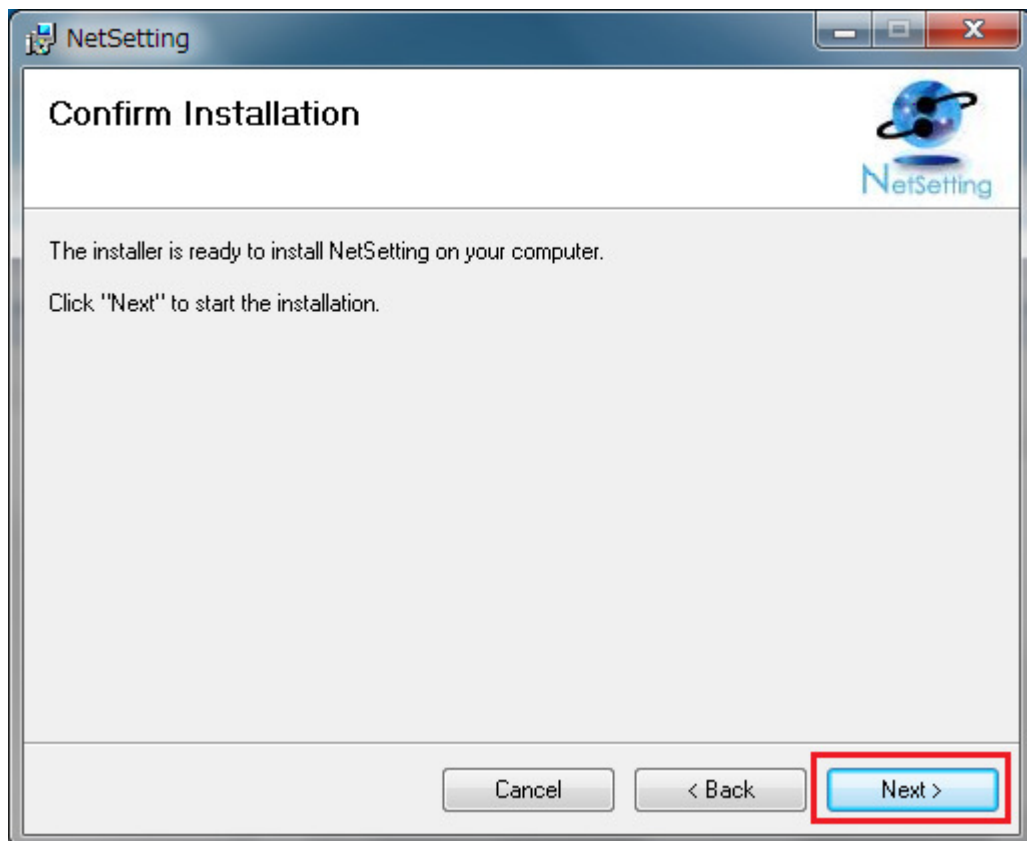
- 2 . Below screen will be shown. Click “Next” to proceed.



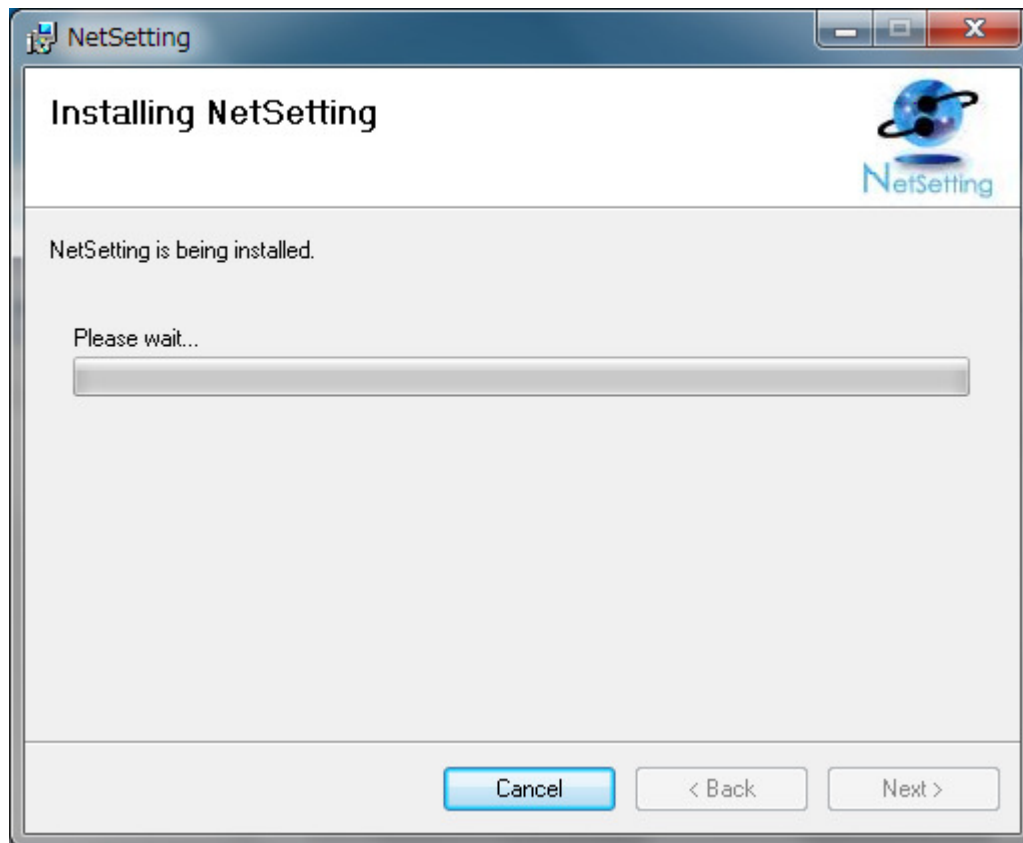
3. Below screen will be shown. Click "Next" to proceed.



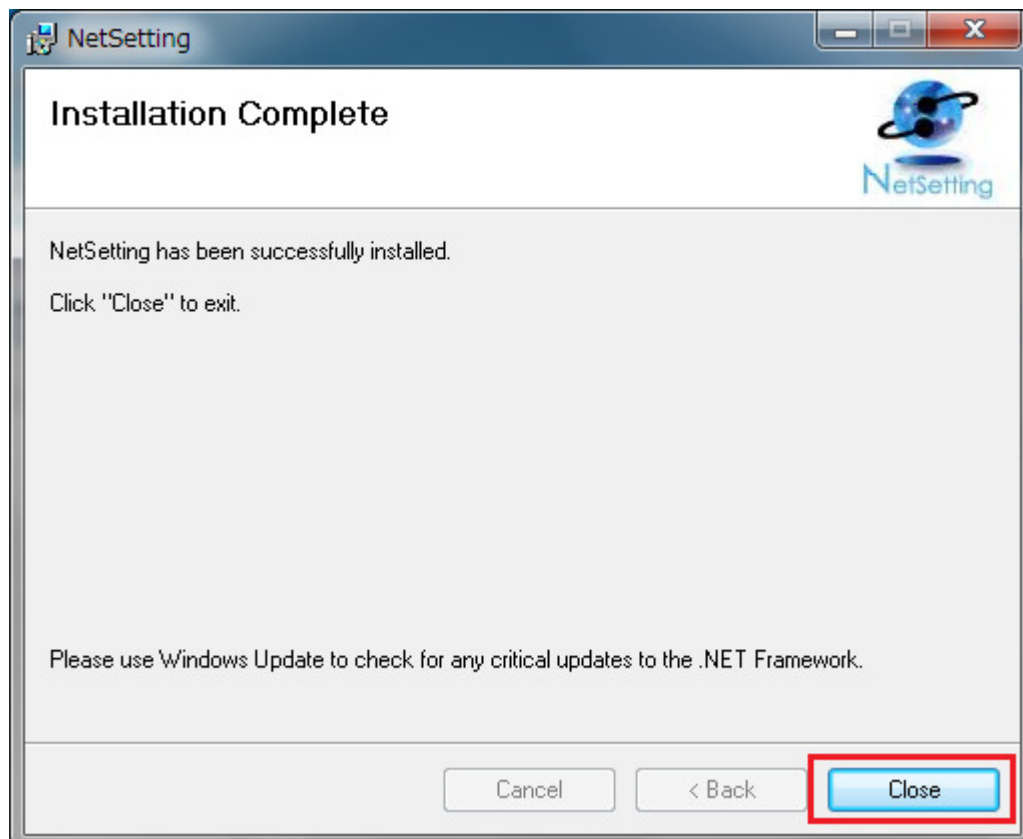
4. Below screen will be shown. Click "Next" to proceed.



5 . Progress bar will proceed on below screen.

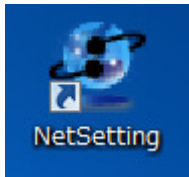


6 . Below screen will be shown as installation complete. Click "Close" to complete.

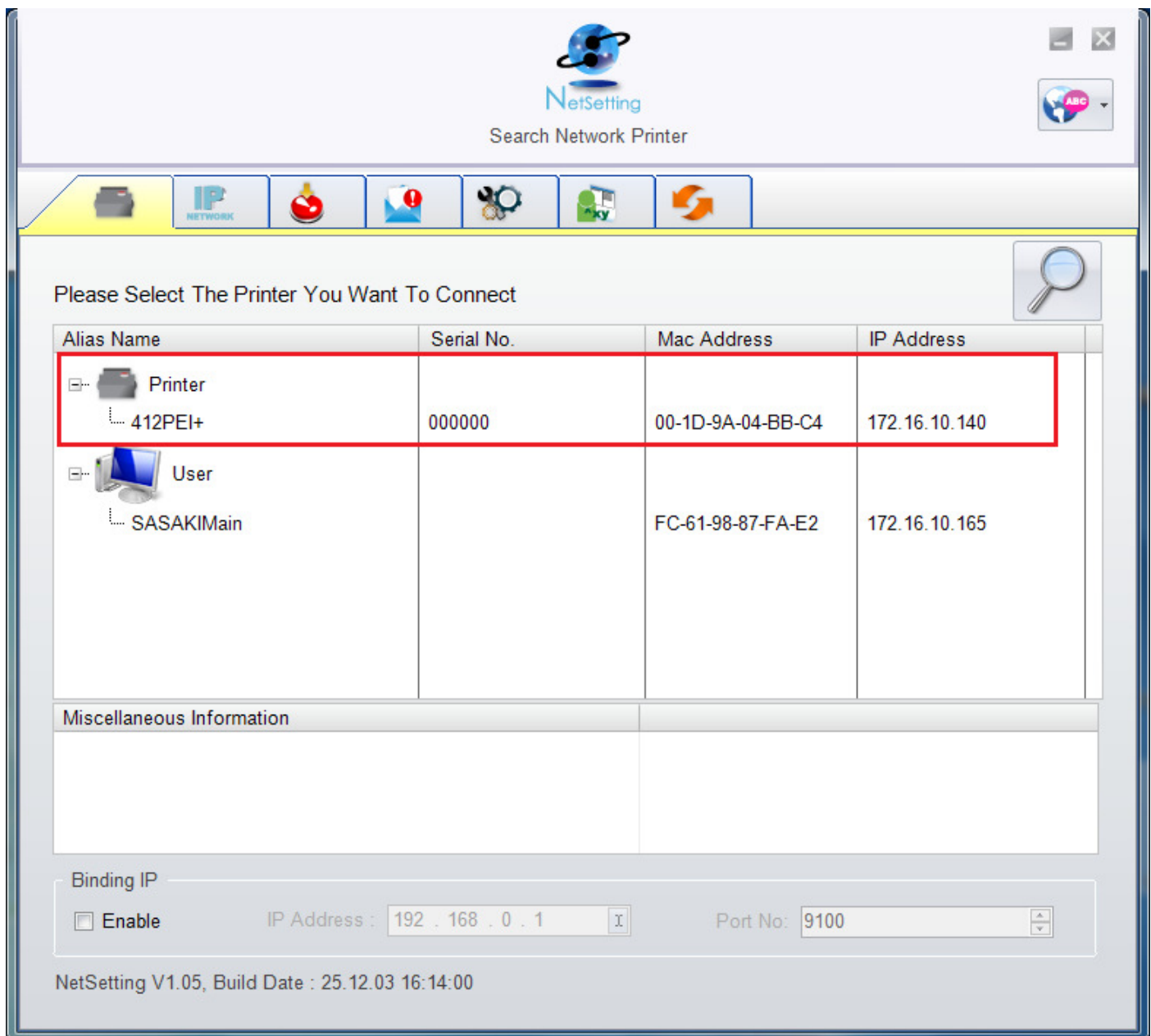


7 . Configuring LAN interface setting.

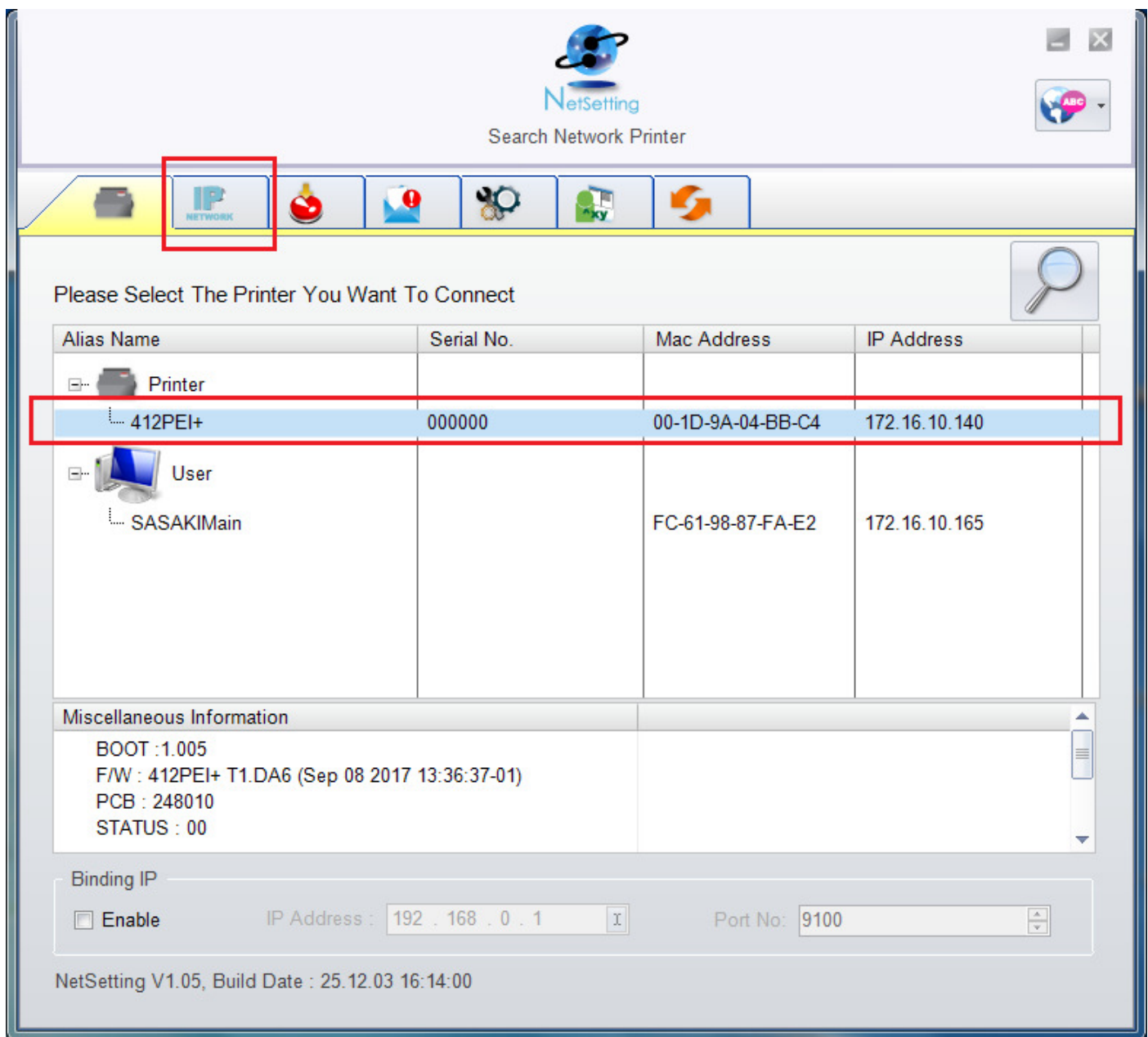
Connect LAN cable to printer and turn power on. Then double click below icon to activate “NetSetting”.



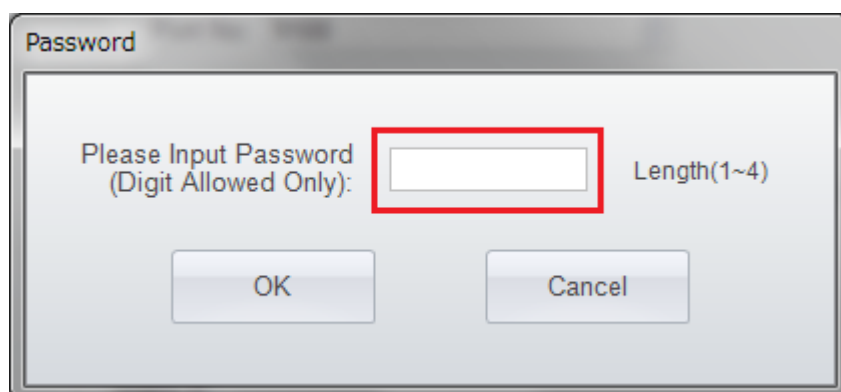
8 . Blow screen will be shown and printer (412PEI+ for this example) will be detected.



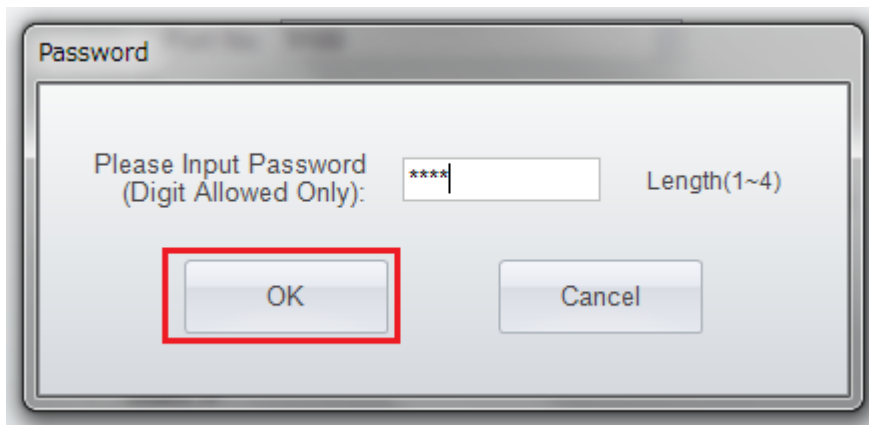
9. Select printer and click “IP tab” on the upper left.



10. Below screen will be shown for password.

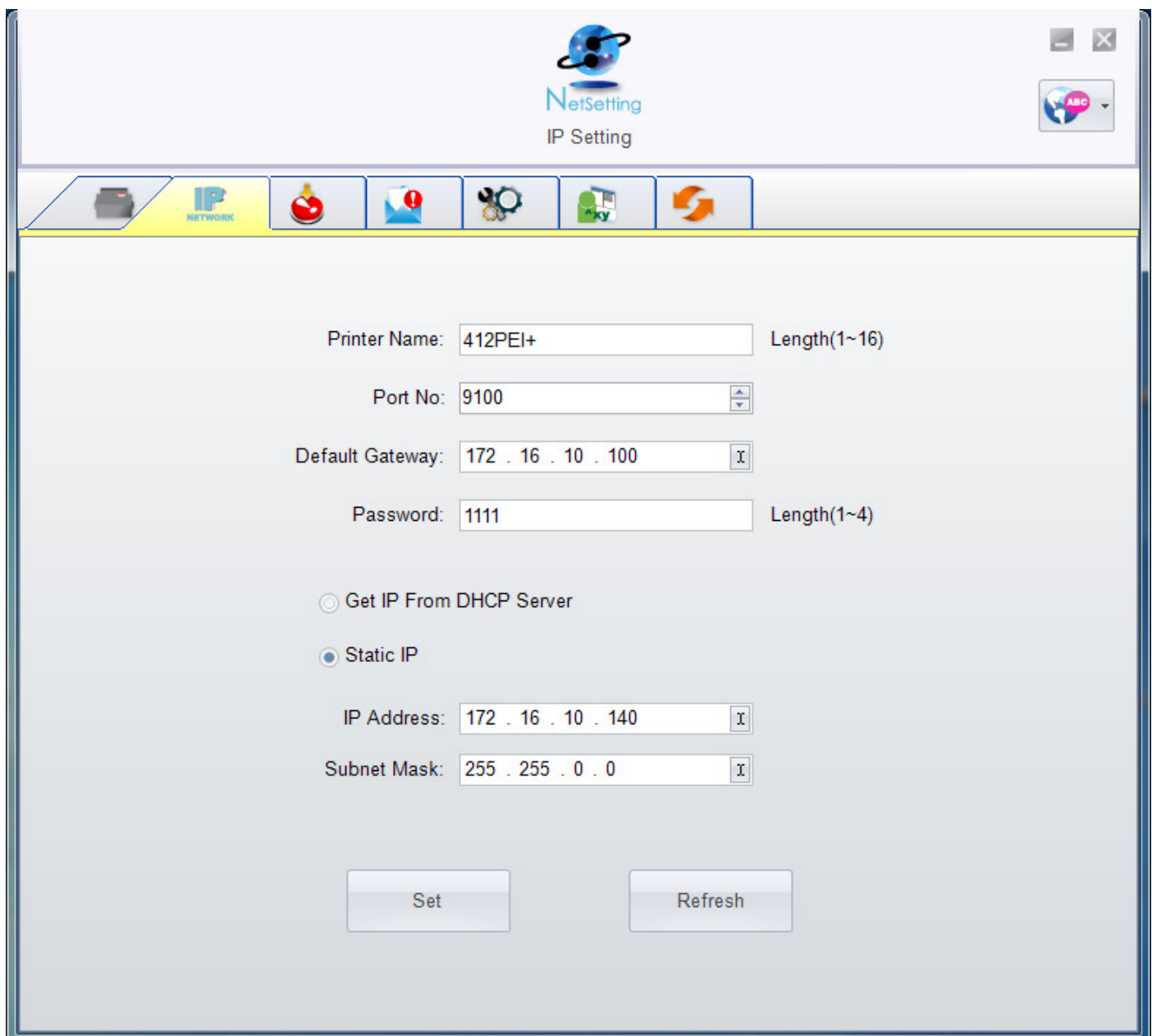


- 1 1 . Input password “1111” and click ”OK” button.



A small dialog box titled "Password" with a light gray background. It contains the text "Please Input Password (Digit Allowed Only):" followed by a text input field containing four asterisks "****". To the right of the input field is the label "Length(1~4)". Below the input field are two buttons: "OK" and "Cancel". The "OK" button is highlighted with a red rectangular border.

- 1 2 . Current setting will be shown on below screen.

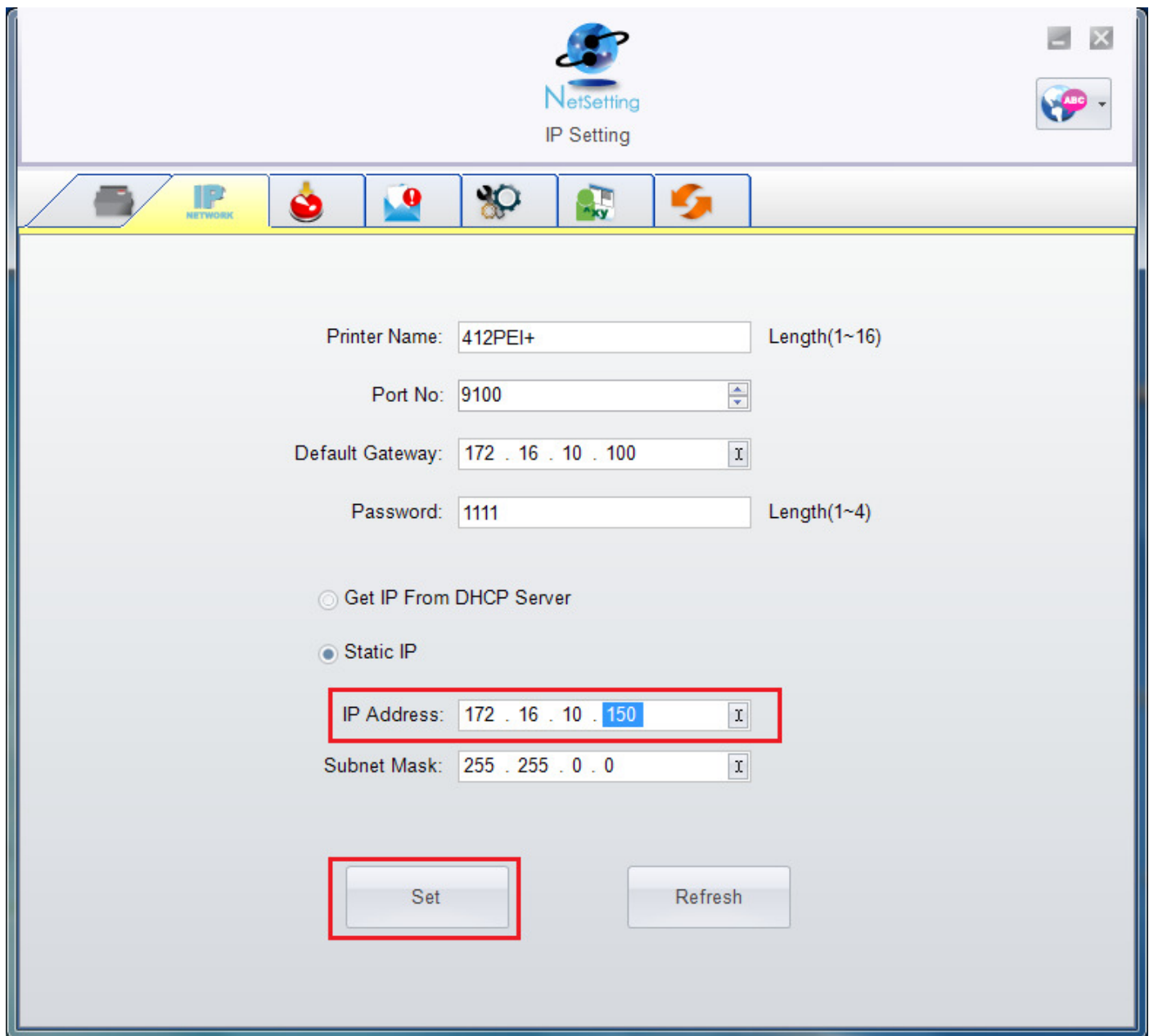


The "NetSetting IP Setting" window is displayed. It has a title bar with standard window controls and a "NetSetting IP Setting" logo. Below the title bar is a toolbar with icons for printer, network, settings, and other functions. The main area contains the following settings:

- Printer Name: 412PEI+ Length(1~16)
- Port No: 9100
- Default Gateway: 172 . 16 . 10 . 100
- Password: 1111 Length(1~4)
- ☐ Get IP From DHCP Server
- ☒ Static IP
- IP Address: 172 . 16 . 10 . 140
- Subnet Mask: 255 . 255 . 0 . 0

At the bottom of the window are two buttons: "Set" and "Refresh".

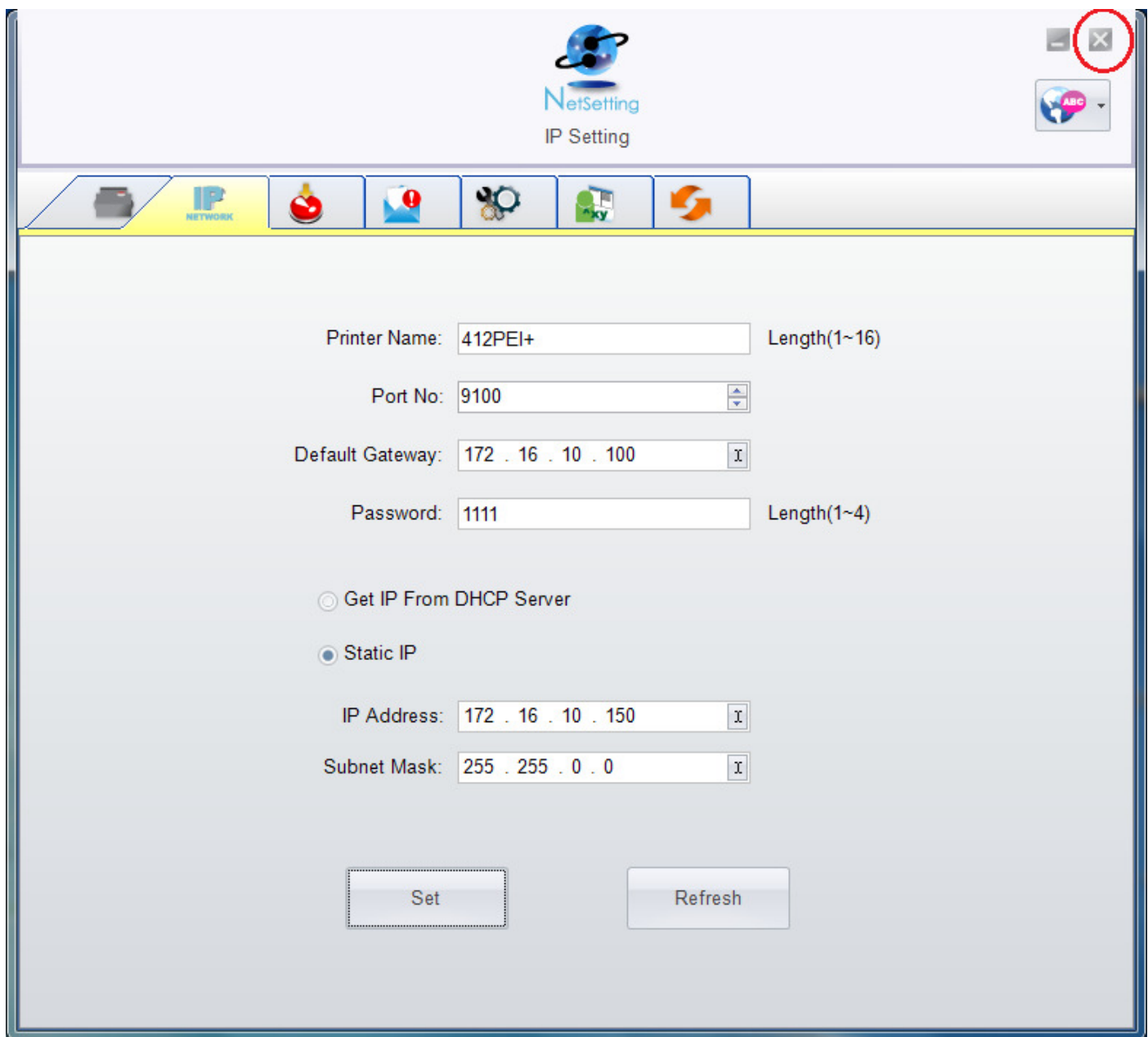
1 3 . Edit setting and click "Set" button to change setting.



The image shows a software window titled "NetSetting IP Setting". The window has a title bar with standard minimize, maximize, and close buttons. Below the title bar is a toolbar with several icons: a printer, a network icon, a red bomb, a blue speech bubble with an exclamation mark, a gear, a green folder, and a circular arrow. The main area of the window contains the following fields and controls:

- Printer Name:** A text box containing "412PEI+" with a "Length(1~16)" label to its right.
- Port No:** A text box containing "9100" with a small up/down arrow icon to its right.
- Default Gateway:** A text box containing "172 . 16 . 10 . 100" with a small "I" icon to its right.
- Password:** A text box containing "1111" with a "Length(1~4)" label to its right.
- IP Configuration:** Two radio buttons are present: "Get IP From DHCP Server" (unselected) and "Static IP" (selected).
- IP Address:** A text box containing "172 . 16 . 10 . 150" with a small "I" icon to its right. This field is highlighted with a red rectangular box.
- Subnet Mask:** A text box containing "255 . 255 . 0 . 0" with a small "I" icon to its right.
- Buttons:** At the bottom, there are two buttons: "Set" and "Refresh". The "Set" button is highlighted with a red rectangular box.

1 4 . This complete LAN setting. Click "X" button on upper right to close "NetSetting".



The image shows a software window titled "NetSetting" with a subtitle "IP Setting". The window has a standard Windows-style title bar with minimize, maximize, and close buttons. The close button, marked with an "X", is circled in red. Below the title bar is a toolbar with several icons: a printer, a network card, a red sphere, a blue square with an exclamation mark, a gear, a green square with a checkmark, and a circular arrow. The main area of the window contains the following fields and controls:

- Printer Name:** A text box containing "412PEI+" with a label "Length(1~16)" to its right.
- Port No:** A spin box containing "9100".
- Default Gateway:** A text box containing "172 . 16 . 10 . 100" with a small "I" icon to its right.
- Password:** A text box containing "1111" with a label "Length(1~4)" to its right.
- IP Configuration:** Two radio buttons are present: "Get IP From DHCP Server" (unselected) and "Static IP" (selected).
- IP Address:** A text box containing "172 . 16 . 10 . 150" with a small "I" icon to its right.
- Subnet Mask:** A text box containing "255 . 255 . 0 . 0" with a small "I" icon to its right.
- Buttons:** At the bottom, there are two buttons: "Set" and "Refresh".